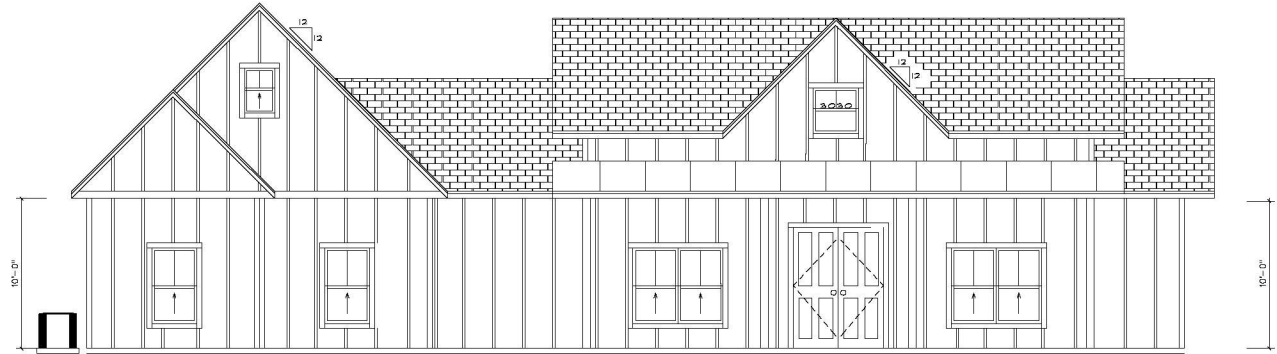
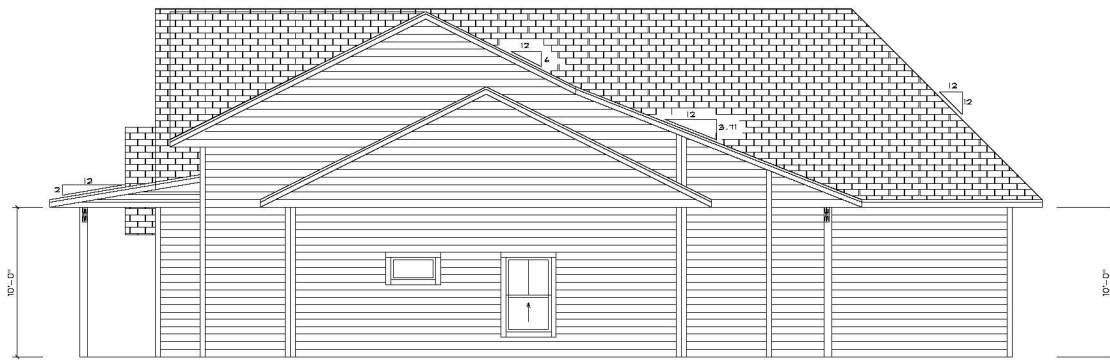


# The Fresh View



FRONT ELEVATION



RIGHT ELEVATION

### WALL SECTION

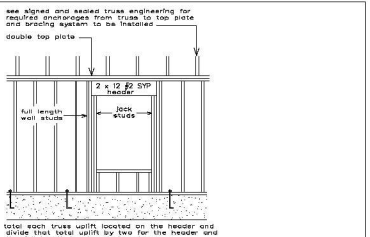
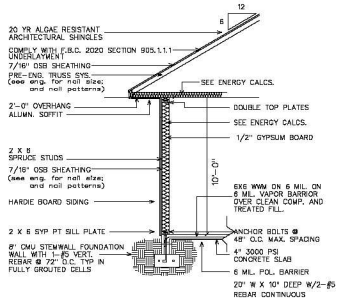


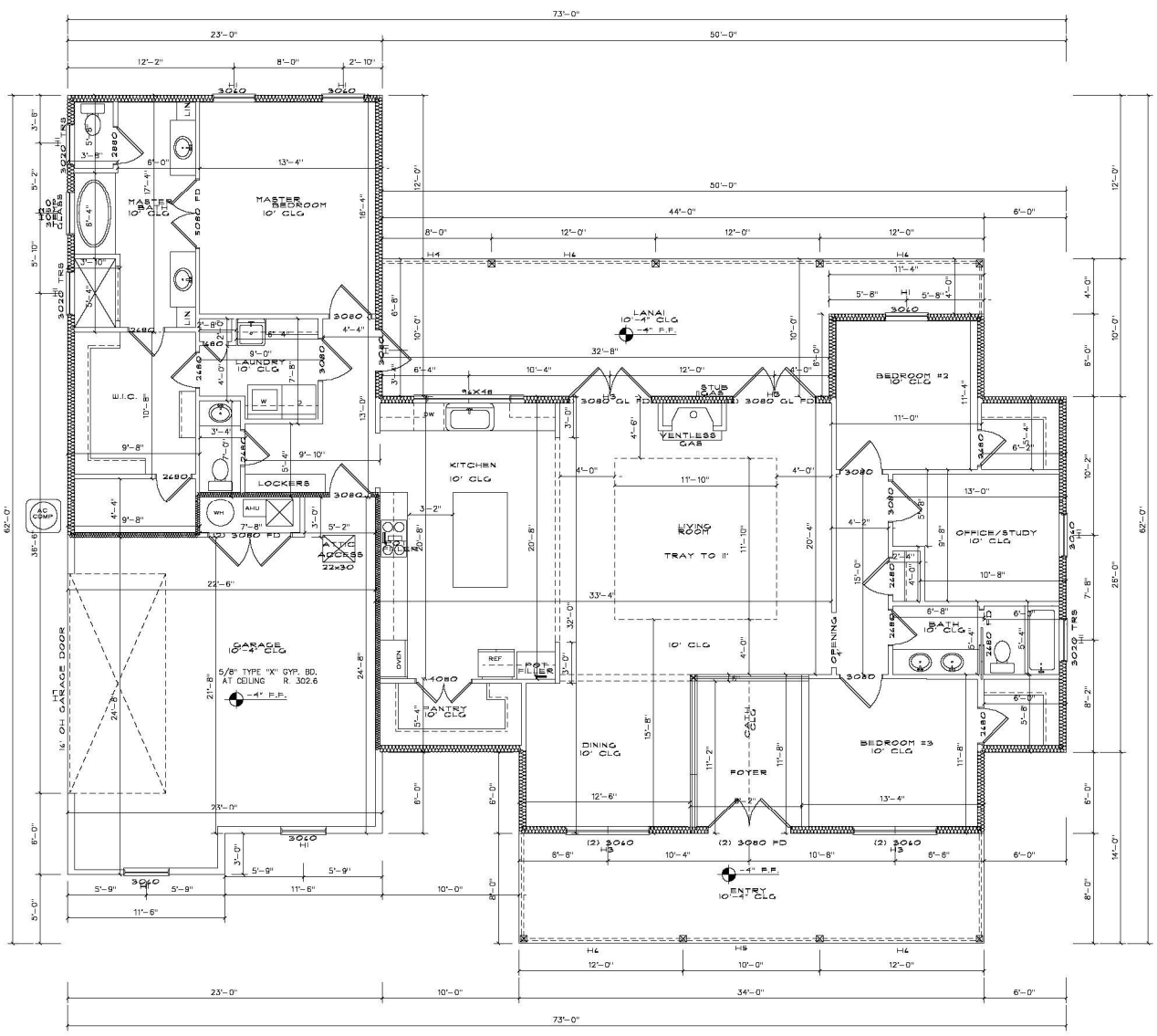
TABLE 605.5  
MINIMUM NUMBER OF STUDS PER JOIST EDGE  
FOR TRUSS ROOFING

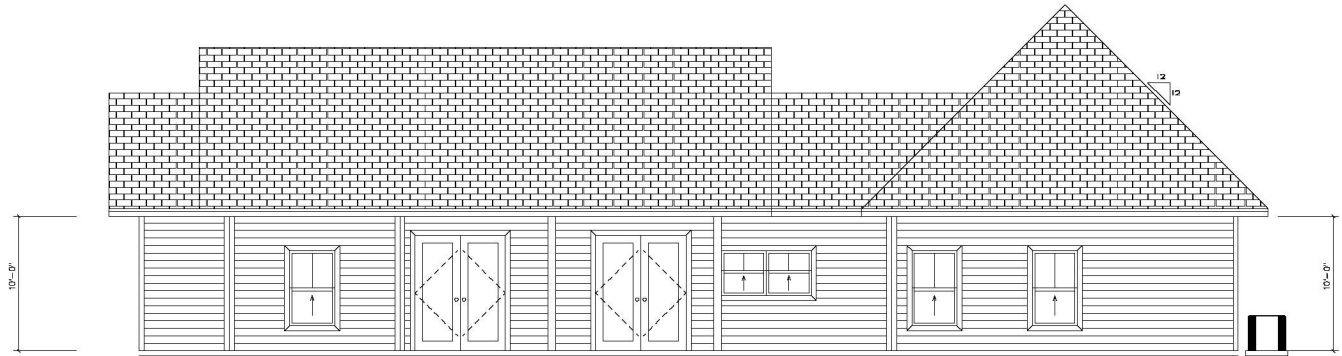
HEADER SPAN (feet)	MINIMUM STUD SPACING (inches)	MIN. STUDS	MIN. STUDS
12'-0" ON 2'	18"	1	1
12'-0" ON 3'	18"	2	1
12'-0" ON 4'	18"	3	2
12'-0" ON 5'	18"	4	3
12'-0" ON 6'	18"	5	4

**CODE STATEMENT:**  
CODE REQUIREMENTS IN EFFECT AT THE TIME OF DESIGN:  
2020 FLORIDA RESIDENTIAL BUILDING CODE (7TH EDITION)

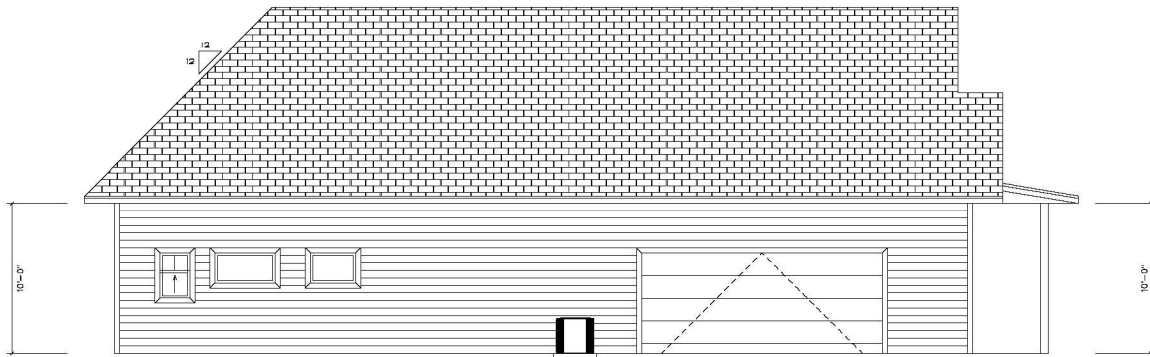
**WINDOW EGRESS:**  
EMERGENCY AND ESCAPE OPENINGS SHALL HAVE A NET CLEAR OPENING OF NOT LESS THAN 5.7 SQUARE FEET (0.50 M<sup>2</sup>). THE NET CLEAR OPENING DIMENSIONS REQUIRED BY THIS SECTION SHALL BE OBTAINED BY THE NORMAL OPERATION OF THE EMERGENCY ESCAPE AND RESCUE OPENING FROM THE INSIDE. THE NET CLEAR HEIGHT OPENING SHALL BE NOT LESS THAN 24 INCHES (610 MM) AND THE NET CLEAR WIDTH SHALL BE NOT LESS THAN 20 INCHES (508 MM).

HEADER I.D.	HEADER SIZE	QTY
H-1	(3) PLY 2 X 12 X 3' - 0" #2 SYP HEADER	10
H-2	(3) PLY 2 X 12 X 4' - 0" #2 SYP HEADER	2
H-3	(3) PLY 2 X 12 X 6' - 0" #2 SYP HEADER	3
H-4	(3) PLY 2 X 12 X 8' - 0" #2 SYP HEADER	3
H-5	(2) PLY 2 X 12 X 10' - 0" #2 SYP HEADER	1
H-6	(3) PLY 2 X 12 X 12' - 0" #2 SYP HEADER	5
H-7	(2) PLY 1.75 X 14 X 18' - 0" LVL HEADER	1
LVL = 2800 F.B. / 1,700,000 M.E.		





REAR ELEVATION



LEFT ELEVATION